

**DESIGNED TO DO THE UNIMAGINABLE:
MAKE YOUR THINKPAD EVEN MORE AMAZING.**

THINKPAD® NOTEBOOK DOCKING



lenovo

NEXT-GENERATION DOCKING SOLUTIONS FROM LENOVO. HOW AMAZING NOTEBOOKS BECOME AMAZING DESKTOP PERFORMERS.

For over a decade, ThinkPad notebooks have continually redefined the standards of portable computing, putting industry-leading design and groundbreaking technology in the hands of smart, savvy and highly mobile business professionals.

So how could they possibly be any better? With ThinkPad notebook docking solutions from Lenovo.

There's the cable-management convenience of the ThinkPad Essential Port Replicator. The expanded digital connectivity and robust security of the ThinkPad Advanced Mini Dock. The uncompromising multimedia capability of the ThinkPad Advanced Dock. Whatever your needs, there's a notebook docking solution from Lenovo to make your ThinkPad notebook as powerful as it is portable.

New Thinking. New ThinkPad.™

ThinkPad is a product of Lenovo, a global company incorporating the former IBM® PC Division. Our mission is to bring more innovation to more people so they can do more amazing things. Find out how at **lenovo.com**



For important warranty information, see page 6.

BECAUSE ONE-SIZE-FITS-ALL NEVER DOES.

With innovations that address a full range of user needs, ThinkPad notebook docking products are optimized for precision and ease—and tailored to perfectly fit a variety of business needs. To dock a supported system*, simply line up the notebook in the designated corner and click it securely into place. Undocking is just as easy, thanks to a logical and well-lighted ejection console.



Ideal for: Cost-conscious individuals and small and medium businesses who need the basics done right

ThinkPad Essential Port Replicator

Everything you need. Nothing you don't. Cable management and quick, easy connectivity to workplace peripherals such as a monitor, keyboard and mouse, printers, Ethernet and USB 2.0 external drives.



Ideal for: Financial services, engineering and digital content creators—anyone who needs multiple monitoring and desktop-quality graphics capability

ThinkPad Advanced Dock

The security and connectivity of the ThinkPad Advanced Mini Dock, enhanced for true desktop expansion. Features Ultrabay™ Enhanced, which accommodates an optional optical or hard-disk drive, and includes a 6-in-1 media card reader, a PCI express slot and an integrated power supply.



Ideal for: Medium and large-enterprise environments that need security without compromising convenience

ThinkPad Advanced Mini Dock

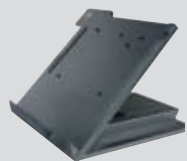
Expanded capability and outstanding value. Adds turn-key security and digital A/V connectivity to advanced cable management. Includes a 90W AC adapter.



Ideal for: X60 series users who want to expand the function of their tablets and ultraportables.

ThinkPad X6 UltraBase™ and ThinkPad X6 Tablet UltraBase

Passthrough cable management enhanced with comfort and convenience. Includes integrated stereo speakers, analog audio and Ultrabay Slim versatility to accommodate an optical or hard-disk drive or an additional battery.



Elevate your productivity.

The ThinkPad Adjustable Notebook Stand lets you position your display at four different heights. Perfect for those who require multiple monitors or simply wish to optimize their integrated display.



ThinkPad Docking Solutions

| Product | ThinkPad® Essential Port Replicator | ThinkPad Advanced Mini Dock | ThinkPad Advanced Dock |
|---|--|---|---|
| Part number (U.S.) | 250510W | 250410U | 250310U |
| Systems supported | T60 Series, R60 Series and Z60 Series | T60 Series, R60 Series and Z60 Series | T60 Series, R60 Series and Z60 Series |
| Ports | 4 USB 2.0, VGA for external monitor, PS/2 for mouse or keyboard, modem, Ethernet | 4 USB 2.0, serial, parallel, VGA for external monitor, DVI-D for digital video, PS/2 for mouse or keyboard, modem, Ethernet, S/PDIF digital audio, microphone in, headphone out | 5 USB 2.0, serial, parallel, VGA for external monitor, DVI-D for digital video, PS/2 for mouse or keyboard, modem, Ethernet, S/PDIF digital audio, microphone in, headphone out |
| USB support (for compatible systems) | 4 USB 2.0 ports | 4 USB 2.0 ports | 5 USB 2.0 ports |
| Ultrabay support | – | – | Ultrabay™ Enhanced |
| Media card readers | – | – | 6-in-1 (reads SD, xD, Compact Flash, Multimedia Card, Memory Stick, and SmartMedia) |
| PCI Express slot | – | – | 1 |
| Ethernet passthrough (for compatible systems) | Gigabit ¹ | Gigabit | Gigabit |
| Security features | Cable lock slot, reinforced metal hooks and integrated system support tray | Key lock, cable lock slot, reinforced metal hooks and integrated system support tray | Key lock, cable lock slot, bay/slot security, reinforced metal hooks and integrated system support tray |
| Hot/warm docking | Yes | Yes | Yes ³ |
| Power | External; uses system AC adapter or AC/DC Combo Adapter option | External; ships with 90W AC adapter | Integrated |
| Power on/off switch | Yes | Yes | Yes |
| Limited warranty ² | 1 year; upgrades available | 1 year; upgrades available | 1 year; upgrades available |

For important warranty information, see page 6.



ThinkPad Docking Solutions

| Product | ThinkPad X6 UltraBase | ThinkPad X6 Tablet UltraBase |
|---|--|--|
| Part number (U.S.) | 40Y8116 | 41U3120 |
| Systems supported | X60 Series | ThinkPad X60 Tablet Series |
| Ports | 4 USB 2.0, serial, parallel, VGA for external monitor, modem, Ethernet, integrated stereo speakers, microphone in, headphone out | 4 USB 2.0, serial, parallel, VGA for external monitor, modem, Ethernet, integrated stereo speakers, microphone in, headphone out |
| USB support (for compatible systems) | 4 USB 2.0 ports | 4 USB 2.0 ports |
| Ultrabay support | Ultrabay Slim | Ultrabay Slim |
| Media card readers | – | – |
| PCI Express slot | – | – |
| Ethernet passthrough (for compatible systems) | Gigabit ¹ | Gigabit |
| Security features | Key lock, cable lock slot | Key lock, cable lock slot |
| Hot/warm docking | Yes | Yes |
| Power | External; uses system AC adapter or AC/DC Combo Adapter option | External; uses system AC adapter or AC/DC Combo Adapter option |
| Power on/off switch | Yes | Yes |
| Limited warranty ² | 3 years | 3 years |

For important warranty information, see page 6.

1.866.96.THINK
lenovo.com



© 2007 Lenovo. Produced in the U.S.A., 05-07, All rights reserved. **Availability:** All offers subject to availability. Lenovo reserves the right to alter product offerings and specifications at any time without notice. Lenovo is not responsible for photographic or typographic errors. **Warranty Information:** To obtain copies of the Lenovo Statement of Limited Warranty, contact your reseller or call Lenovo. In the United States, call 800-426-7378, or write to: Warranty Information, 500 Park Offices Drive, Research Triangle Park, NC 27709, Attn: Dept ZPYA/B600. Lenovo makes no representation or warranty regarding third-party products or services. **Footnotes:** [1] **Gigabit Ethernet** is only available on supported notebooks; docking solutions with Gigabit Ethernet are also backwards compatible with existing 10/100 Ethernet standards. [2] **Limited warranty:** Support unrelated to a warranty issue may be subject to additional charges. [3] **Hot/Warm Docking:** Except when using a graphics adapter in the PCI Express slot. Windows requires cold boot. Certain IBM and ThinkPad logo products are not manufactured, warranted or supported by IBM or Lenovo; IBM and Lenovo logos and trademarks used under license. Contact Lenovo for details. This publication was developed for products and services offered in the United States. Lenovo may not offer the products, services or features discussed in this document in other countries. Information is subject to change without notice. Consult your local Lenovo representative for information on offerings available in your area. **The following are trademarks of Lenovo:** Lenovo, the Lenovo logo, ThinkPad, UltraBase and Ultrabay. Other company, product and service names may be trademarks or service marks of others.

Visit lenovo.com/safecomputing periodically for the latest information on safe and effective computing.